

CLASSIFICATION REPORT

REACTION TO FIRE

according to EN 13501-1:2018

Contract №: 03072/24/Z00NZIP

| | |
|---------------------------------|---|
| Customer: | Fiberplast Biobased B.V. De Boeg 24 9206 BB DRACHTEN The Netherlands |
| Prepared by: | Fire Research Department Building Research Institute 1 Filtrowa Str. 00-611 Warszawa |
| Product name: | RIWOOD FR CP series closed vertical façade system end-use application |
| Classification report №: | 03072.2/24/Z00NZIP-ENG |
| Issue nr: | 1 |
| Date of issue: | 10.03.2025 |

This classification report consists of three pages and may only be used or reproduced in its entirety.

1. Introduction

This classification report defines the classification assigned to the RIWOOD FR CP series closed facade system end-use application in accordance with procedures given in EN 13501-1:2019-02.

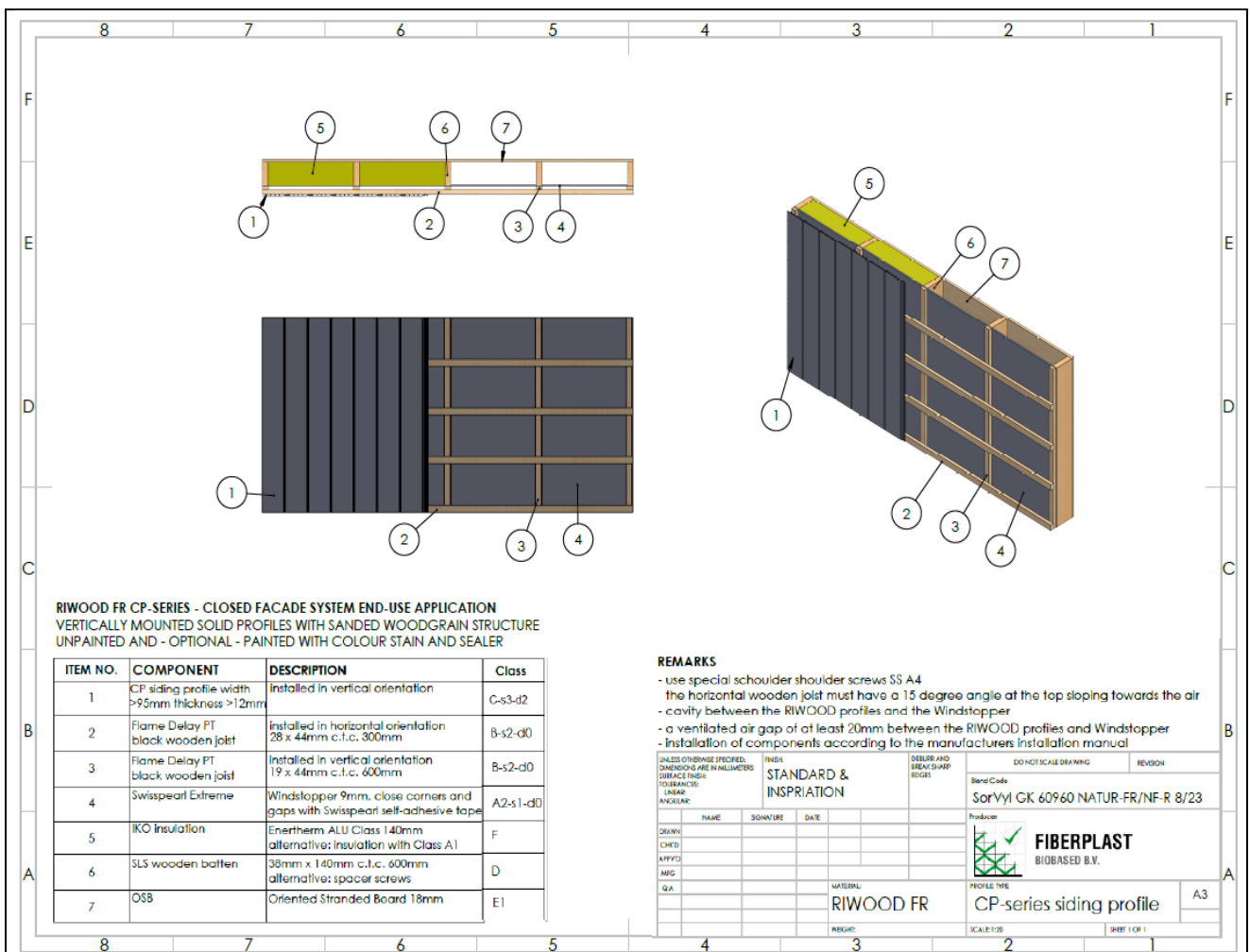
2. Details of the classified product

2.1. General

Closed facade system.

2.1 Product description

The product is described below.



Description of interior strips:

Nominal thickness from 12 mm to 14 mm +/- 10 % (measured on the rib)

Nominal width minimum 105 mm (working width)

Surface structure: sanded woodgrain structure

Type of profile: siding profile

Paint consumption: 0,1 l/m²

Varnish wear: 0,1 l/m²

Optional coating System: color stain and sealer and painted and unpainted

3. Test reports and test results as a basis for the classification

3.1. Test reports

| Laboratory | Customer | Test report nr | Test method |
|--|-----------------------------|---------------------------|---------------------------|
| Fire Testing Laboratory Building Research Institute | Fiberplast Biobased B.V. | LZP06-03072/24/Z00NZN-ENG | PN-EN ISO 11925-2:2020-09 |
| | | LZP02-03072/24/Z00NZN-ENG | PN-EN 13823+A1:2022-12 |

3.2. Test results

| Test method | Parameter | Number of tests | Results | |
|---|--|-----------------|---------------------------------|-------------------------------|
| | | | Continuous parameter – mean (m) | Compliance with the parameter |
| PN-EN ISO 11925-2:2020-09 30 s exposure surface and edge exposure | Flame propagation F _s ≤150 mm | 6 | (-) | Y |
| | Flaming droplets/particles | | (-) | N |
| PN-EN 13823 +A1:2022-12 | FIGRA _{0,2MJ} [W/s] | 3 | 97,3 | (-) |
| | FIGRA _{0,4MJ} [W/s] | | 97,3 | (-) |
| | LFS < edge | | (-) | T |
| | THR _{600s} [MJ] | | 10,6 | (-) |
| | SMOGR _A [m ² /s ²] | | 86,7 | (-) |
| | TSP _{600s} [m ²] | | 1263,5 | (-) |
| Flaming droplets/particles | (+) | T | | |

(-): not applicable, Y: Yes, N: No

4. Classification and the field of application**4.1. Reference of the classification**

The classification has been carried out in accordance with EN 13501-1:2019-02.

4.2. Classification

The product, RIWOOD FR profiles CP series closed vertical facade system end-use application, in relation to its reaction to fire behaviour is classified:

C

The additional classification in relation to smoke production is:

s3

The additional classification in relation to flaming droplets/particles is:

d2

The format of the reaction to fire classification for construction products excluding floorings and linear pipe thermal insulation products is:

| Fire behaviour | | Smoke production | | | Flaming droplets | |
|----------------|---|------------------|----------|---|------------------|----------|
| C | - | s | 3 | , | d | 2 |

i.e.: **C-s3,d2**

Reaction to fire classification: C-s3,d2

4.3 Field of application

This classification is valid for the following end-use applications:

- This classification is RIWOOD FR CP series closed vertical façade system mounted in a system end-use application wall coverings described in section 2.

5. Limitations

This classification will be valid until:

- The test method remains unchanged,
- Product standard or technical assessment remains unchanged,
- Constructional or material modifications do not exceed the limits of the field of application defined in 4.3.

This classification report has been issued in electronic form, with qualified electronic signatures of responsible persons. A document with a qualified electronic signature whose certificate has already expired is still valid (the certificate was valid on the day the document was signed). Certified copies may be issued by the ITB Fire Research Department only at the request of the Report Owner. The printout of this report is not an original document.

This classification document does not represent a technical assessment or certification of the product.

| Classification | Name | Date | Signature |
|----------------|--------------------------------|------------|-------------|
| Prepared by | Łukasz Jarochowicz | 19.02.2025 | e-signature |
| Verified by: | Bartłomiej K. Papis, PhD. Eng. | 19.02.2025 | e-signature |

Head of Fire Research Department
Bartłomiej K. Papis, PhD. Eng.
e-signature