

CLASSIFICATION REPORT

REACTION TO FIRE

according to EN 13501-1:2018

Contract №: 03072/24/Z00NZZP

Customer:	Fiberplast Biobased B.V. De Boeg 24 9206 BB DRACHTEN The Netherlands
Prepared by:	Fire Research Department Building Research Institute 1 Filtrowa Str. 00-611 Warszawa
Product name:	RIWOOD FR PK series open façade system end-use application
Classification report №:	03072.4/24/Z00NZZP-ENG
Issue nr:	1
Date of issue:	10.03.2025

This classification report consists of three pages and may only be used or reproduced in its entirety.

1. Introduction

This classification report defines the classification assigned to the RIWOOD PK series open facade system end-use application in accordance with procedures given in EN 13501-1:2019-02.

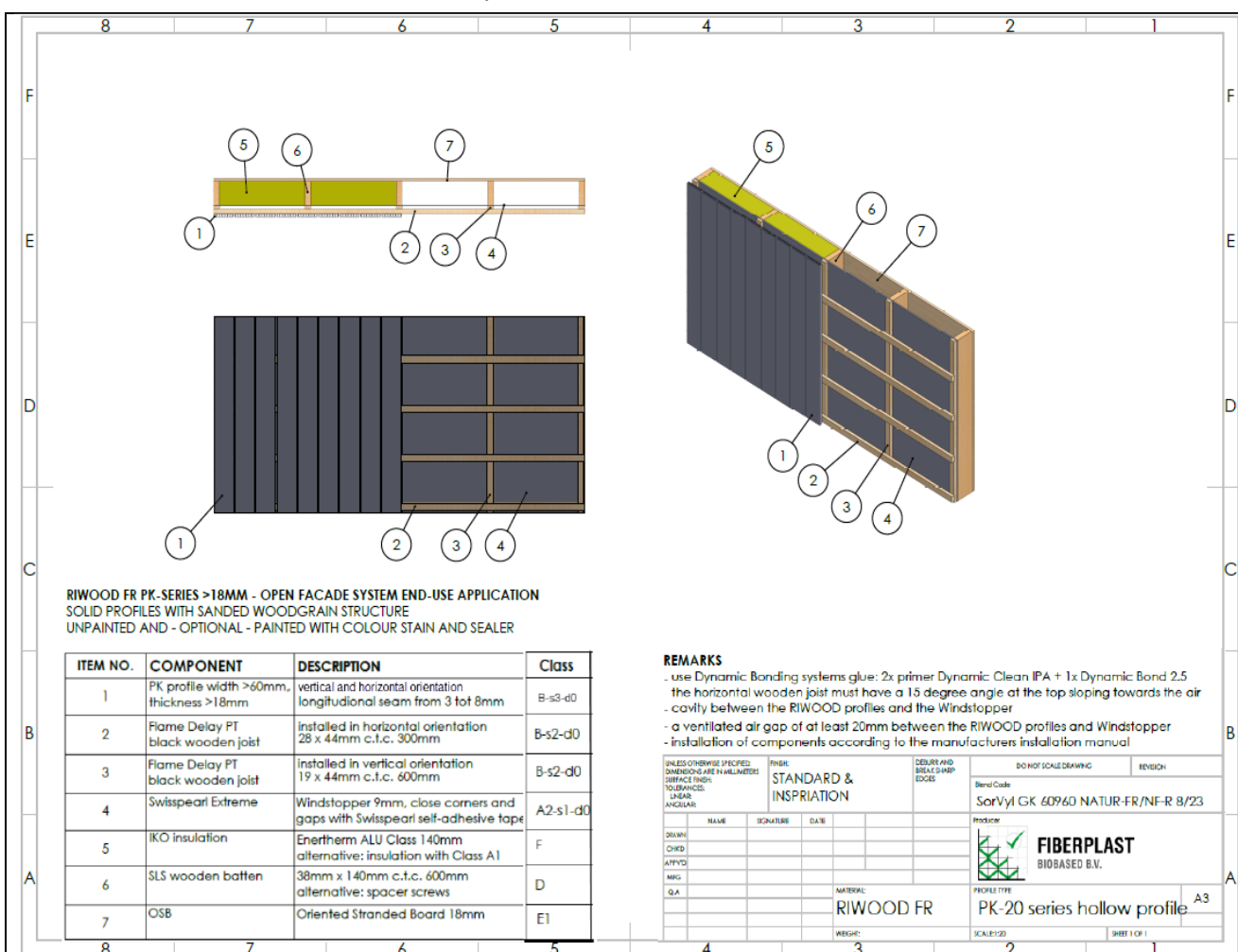
2. Details of the classified product

2.1. General

Open facade system.

2.1 Product description

The product is described below.



Description of interior strips:
 Nominal thickness from 18 mm to 20 mm +/- 10 %
 Nominal width minimum 60 mm
 Surface structure: sanded woodgrain structure
 Type of profile: chamber profiles
 Paint consumption: 0,1 l/m²
 Varnish wear: 0,1 l/m²
 Optional coating System: color stain and sealer and painted and unpainted

3. Test reports and test results as a basis for the classification

3.1. Test reports

Laboratory	Customer	Test report nr	Test method
Fire Testing Laboratory Building Research Institute	Fiberplast Biobased B.V.	LZP08-03072/24/Z00NZN-ENG	PN-EN ISO 11925-2:2020-09
		LZP04-03072/24/Z00NZN-ENG	PN-EN 13823+A1:2022-12

3.2. Test results

Test method	Parameter	Number of tests	Results	
			Continuous parameter – mean (m)	Compliance with the parameter
PN-EN ISO 11925-2:2020-09 30 s exposure surface and edge exposure	Flame propagation F _s ≤150 mm	6	(-)	Y
	Flaming droplets/particles		(-)	N
PN-EN 13823 +A1:2022-12	FIGRA _{0,2MJ} [W/s]	3	95,9	(-)
	FIGRA _{0,4MJ} [W/s]		95,9	(-)
	LFS < edge		(-)	T
	THR _{600s} [MJ]		5,8	(-)
	SMOGRA [m ² /s ²]		68,8	(-)
	TSP _{600s} [m ²]		938,0	(-)
	Flaming droplets/particles		(-)	N

(-): not applicable, Y: Yes, N: No

4. Classification and the field of application

4.1. Reference of the classification

The classification has been carried out in accordance with EN 13501-1:2019-02.

4.2. Classification

The product, RIWOOD FR profiles PK series open facade system end-use application, in relation to its reaction to fire behaviour is classified:

B

The additional classification in relation to smoke production is:

s3

The additional classification in relation to flaming droplets/particles is:

d0

The format of the reaction to fire classification for construction products excluding floorings and linear pipe thermal insulation products is:

Fire behaviour		Smoke production			Flaming droplets	
B	-	s	3	,	d	0

i.e.: **B-s3,d0**

Reaction to fire classification: B-s3,d0

4.3 Field of application

This classification is valid for the following end-use applications:

- This classification is RIWOOD PK series open façade mounted horizontal or vertical in a system end-use application wall coverings described in section 2.

5. Limitations

This classification will be valid until:

- The test method remains unchanged,
- Product standard or technical assessment remains unchanged,
- Constructional or material modifications do not exceed the limits of the field of application defined in 4.3.

This classification report has been issued in electronic form, with qualified electronic signatures of responsible persons. A document with a qualified electronic signature whose certificate has already expired is still valid (the certificate was valid on the day the document was signed). Certified copies may be issued by the ITB Fire Research Department only at the request of the Report Owner. The printout of this report is not an original document.

This classification document does not represent a technical assessment or certification of the product.

Classification	Name	Date	Signature
Prepared by	Łukasz Jarochowicz	19.02.2025	e-signature
Verified by:	Bartłomiej K. Papis, PhD. Eng.	19.02.2025	e-signature

Head of Fire Research Department
Bartłomiej K. Papis, PhD. Eng.
e-signature